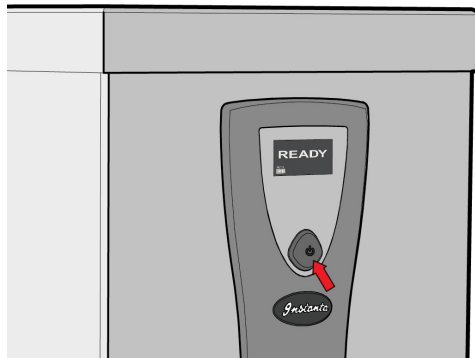
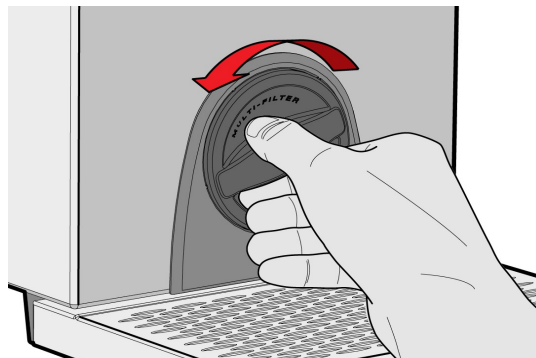


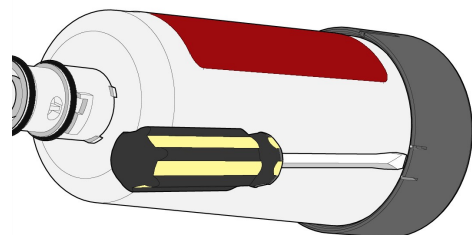
# Instanta SF Range—AQ35 Filter Replacement Instructions



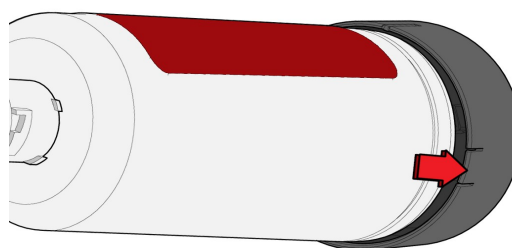
1. Switch boiler off and draw down water to tap level.



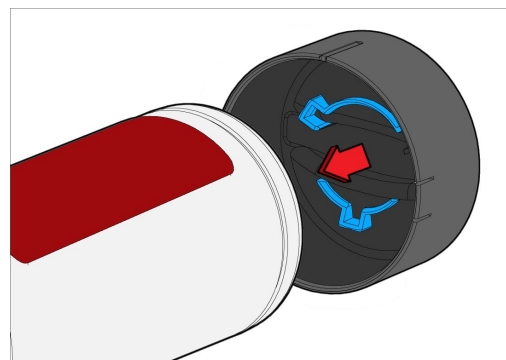
2. Grip Cartridge and rotate a quarter turn to the left and pull forward. CAUTION: A small amount will drain from the head and be directed to the front drip-tray as cartridge is removed.



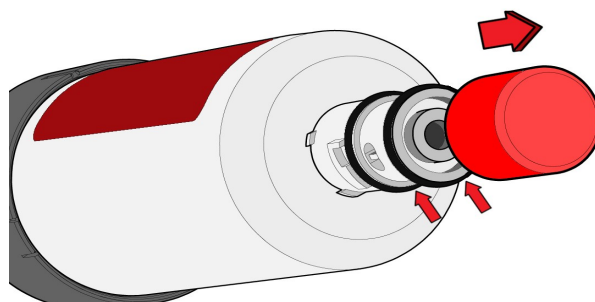
3. Align a flat screwdriver with the tab on the filter cap and gently push.



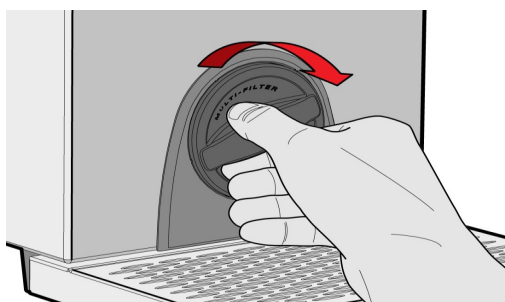
4. With one tab loosened, pull the filter cap off the old cartridge.



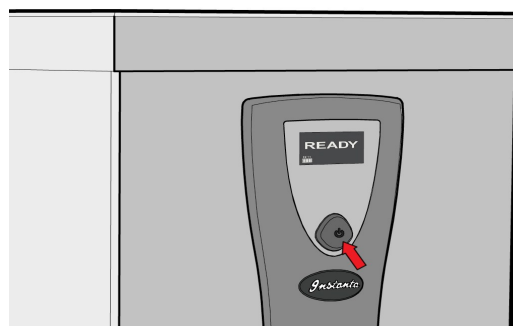
5. Align the shape on the inside of the filter cap (highlighted above) with the shape on the end of the new filter and push the two together until it clicks firmly in place.



6. Remove protective cap from top of new cartridge and ensure the two rubber seals are in place.



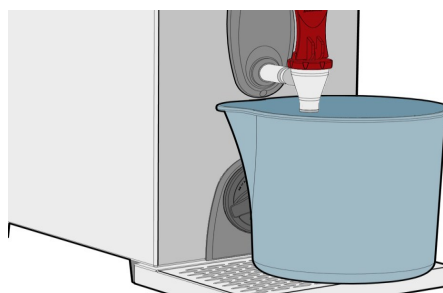
7. Insert new cartridge and turn until it locates. Install with a quarter turn to the right until cartridge comes to a complete stop (Inlet water will automatically turn on)



8. Switch boiler back on and allow to fill up for at least 15 minutes .



9. To reset filter monitor...Press and hold "On/Off" button, screen will go blank but continue to hold, until "READY" message is displayed on a red screen.



10. Drain –off approximately 10 litres of water. The boiler is now ready for use.