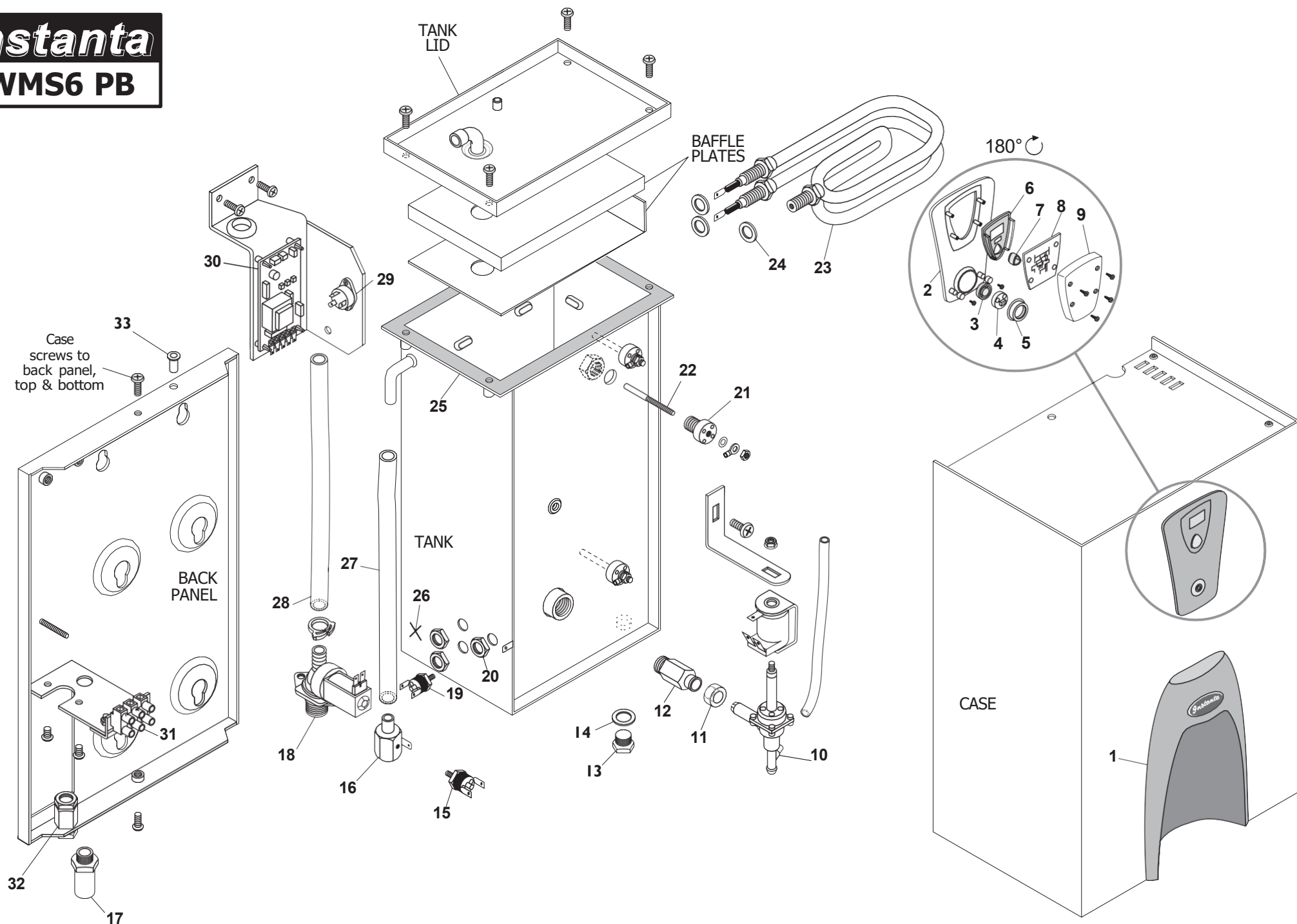


Instanta

WMS6 PB

D.104



CTS5PB & CTS10PB Exploded Drawing Price List

Dwg No.	Description	Part No.
1	Plastic Cup Recess Moulding	DBPLA1
2	Plastic Front Strip Moulding	DBPLA2
3	Rubber Push Button	D309N
4	Push Button PCB	XEF403
5	Push Button PCB Retaining Ring	DBPLA3
6	Display Window	XEN613
7	Rubber On/Off button	XEN614
8	Display PCB	XEF404
9	Display Back Box	EC370PS
10	Over-boil Cut-out Brass Mount	XETR80
11	Over-boil Thermal Cut-out	XETR7
12	Silicone Elbow	SELB38
13	Hot Water Outlet Solenoid	SOL24
14	Silicone Air-vent Tube	SR8
15	Air-vent Adaptor	SRF13PB
16	Plastic Cold Water Inlet Tube (Blue)	JGS38
17	Hot Water Solenoid Silicone Washer	SOL19W
18	Brass Hot Water Solenoid Tank Adaptor	XTP1019PB
19	PTFE Probe Holder	E307A
20	Stainless Steel Probe	PRB1C
--	Probe Assembly (items 18 & 19)	PRB12A
21	Tank Gasket	XENPB510
22	Probe Locknut	T514
23	Heating Element Washers	XEN100W
24	Heating Element	XEN175
25	3/8" Equal Elbow	JGXE3
26	Nylon Foot	D208
27	Foot Insert	D208I
28	Chrome Inlet Fitting	XOV20
29	Rear Overflow Fitting	XOV31
30	1/4" Brass Locknut	T513
31	14mm Shake-proof Washer	BV33
32	M16 Shake-proof Washer	BV40
33	3/8" Brass Locknut	B306
34	3/4" to 3/8" Solenoid adaptor	JGE3834BS
35	Cold Water Inlet Solenoid	SOL12
36	Silicone Sleeve	CM28
37	Brass Gauze Retainer	EOVF2
38	Main Control PCB	XEF402A
39	Triac	XE851
40	Terminal Block	E1254
41	Blue Overflow 'T' Piece	NTP10
42	Silicone Overflow Tube (Clear)	SR9
43	Outlet Bridge c/w Stainless Outlet Elbow	Ring Spares
44	Cold Water Silicone Inlet Tube (Grey)	ACC309S
45	Element Boil-dry Thermal Cut-out	XETR5
46	Element Locknut	T513